



Elm Bank Cottage

Hutton, Berwickshire, TD15 1TS

Offers Over £150,000

www.aitchisons.co

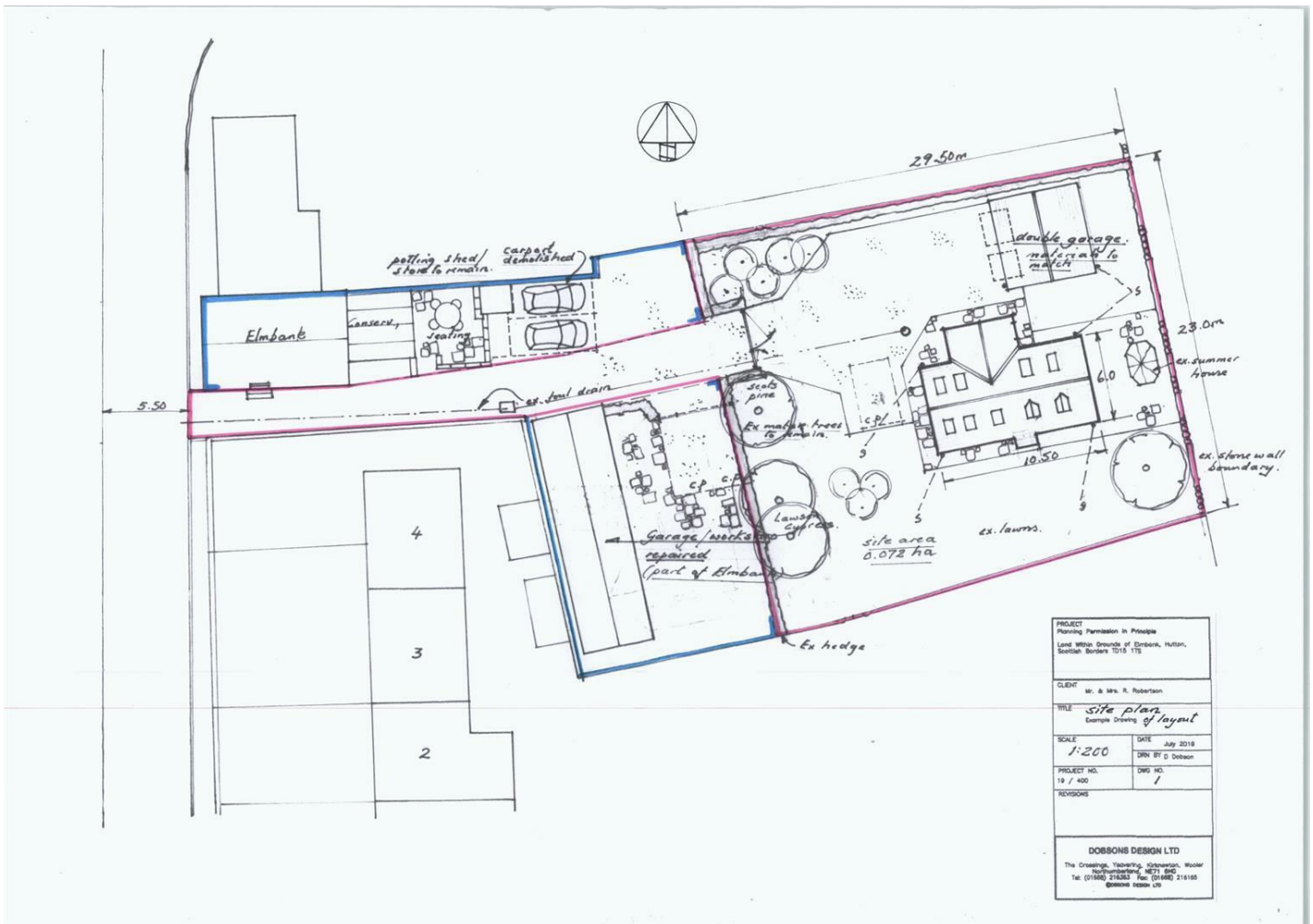


VIEWING BY APPOINTMENT ONLY

We are delighted to offer for sale this superb building plot, which has outline planning permission for one dwelling (19/01385/ppp). The plot is located in a secluded position on the outskirts of this small Border village, with open views over the surrounding countryside. The proposal submitted to the Scottish Borders Council was for a detached one and a half storey three bedroom house, however, this could be altered by the new owner.

This stunning site has services that adjoin the plot, which would be easy to develop as it is a level site. Hutton is a small village one mile west of Paxton and six miles from Berwick-upon-Tweed, which is the nearest town, with excellent facilities such as shopping, sporting clubs and a railway station.

Viewing is recommended.



Important Information You may download, store and use the material for your own personal use and research. You may not republish, retransmit, redistribute or otherwise make the material available to any party or make the same available on any website, online service or bulletin board of your own or of any other party or make the same available in hard copy or in any other media without the website owner's express prior written consent. The website owner's copyright must remain on all reproductions of material taken from this website.

Berwick Office
36 Hide Hill, Berwick-upon-Tweed
Northumberland, TD15 1AB

T: (01289) 307571
F: (01289) 302948
E: berwick@aitchisons.co

Wooler Office
25 High Street, Wooler
Northumberland, NE71 6BU

T: (01668) 281819
F: (01668) 281717
E: wooler@aitchisons.co



Zoopa.co.uk

